

**SMS
MEER**

SMS group

LOW SPEED GUIDES

for Rod & Bar Mills



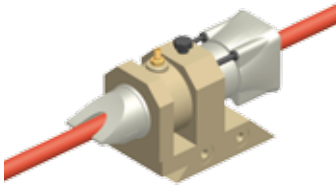
SERVICE worldwide

LOW SPEED GUIDES

for Rod & Bar Mills

SMS Meer have always been at the forefront of Rolling Mill Technology and is one of the worldwide market leaders within this industry. To keep and strengthen this position SMS Meer are constantly adapting and updating equipment to keep ahead of current market trends and offer the most advanced rolling mill technology. As a result of this a program of technical enhancement is running to reengineer the complete range of existing guides and also to introduce new guide types as are required in the more modern Rolling Mill environment. This leads into the ability to offer the customers a complete guiding solution whatever their requirements are.

STATIC ENTRY GUIDE



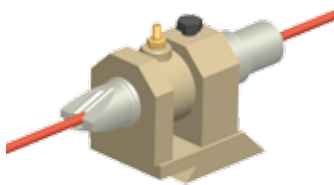
The Static Entry Guides have been designed as two interlocking halves which are located in a common guide holder

with a single clamp bolt. The interlocked halves have considerable lateral adjustment within the holder to ensure the product can be guided as close as possible to the mill rolls. It also accommodates greater redressing of the front profile, giving the guides a longer service life. Water is fed through into the internal bore of the Guide halves to aid with cooling and to help remove build up of scale in the chamber. This is done directly through a water annulus in the guide holder.

FEATURES

- Adjustable to allow for accurate setting and greater redressing
- Adjusting stop screw for simple setting
- Single clamp screw for quick replacement
- Water sprays to internal bore for cooling and scale removal
- Reduced exposed pipework, as water is fed through guide holder

STATIC STRIPPER GUIDE



The Static Stripper Guides have been designed like the entry guides as two interlocking halves which are located in

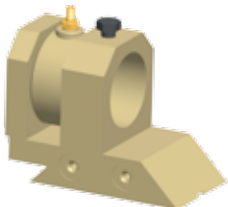
a common guide holder with a single clamp bolt. The Strippers fit into the exact same holder as the Entry Guides and have all the same benefits including the lateral adjustment and water feeds. The Strippers have precisely designed fingers which fit close to the Mill Roll profile to ensure the optimum stripping of the product and smooth transition through the mill stands.

FEATURES

- Adjustable to allow for accurate setting and greater redressing
- Precise stripper fingers for more stable stripping
- Single clamp screw for quick replacement
- Water sprays to internal bore for cooling and scale removal
- Reduced exposed pipework, as water is fed through guide holder

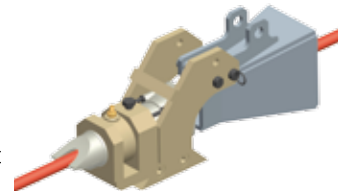
STATIC GUIDE HOLDER

The Static Guide Holders have been designed to be common for both Entry and Stripper statics, this allows for a reduced requirement for stock and spares. They have a single clamping bolt for simple adjustment and quick guide changes. An integral water annulus is designed for feeding through into the static bores. The holder can be used with an additional entry funnel for set ups where the distance between stands and inter-stand equipment is greater.



FEATURES

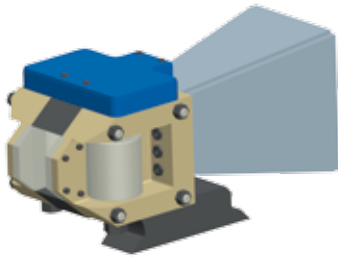
- Common holder for entry and exit
- Water feed through annulus for cooling & scale removal
- Single clamp bolt for simple guide change and adjustment



MONO-BLOCK - ROLLER ENTRY GUIDE

Strength and simplicity are the key features of the Mono-Block Guide. The guide is of a robust construction designed to cope with the high impact loads which are common in the roughing mill area.

It is a reliable guide, easy to set and maintain. The design uses a minimum of parts, common where



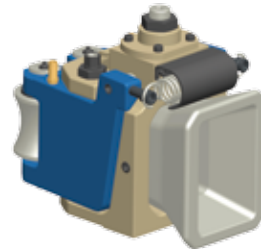
possible and all easy to remove and replace. Having a single point adjustment for the guide rolls allows for quick, easy setting both on the mill and in the guide shop. The guide is built using a sandwiched modular construction allowing the same external parts to be used with different widths of central parts. This allows the flexibility of a range of guides to accept a wider range of stock sizes, while keeping the majority of parts common and reducing the spare part stock requirements.

FEATURES

- Robust construction
- Compact design, easy to set and maintain
- Single point symmetrical adjustment of guide rolls
- Easily replaceable wear parts
- Minimum parts for low spare stock levels
- Interchangeable centre pieces for width variations
- All workings protected under a cover
- Guide roll cooling via replaceable nozzles

TWO ROLLER ENTRY GUIDE

The Two Roller Entry Guides have been designed with performance and maintenance as its key features. The guides are strong enough and can accommodate a multitude of stock shapes and sizes. They can be used from the roughing mill to the finishing stands. The guide family is made up of various size housings and adjustment



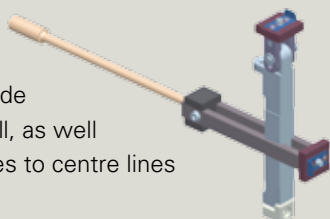
mechanisms, each with its own range of interchangeable parts (roller holders and rollers). This allows for the more accurate guiding of a wider range of products while keeping the overall spares stock to a minimum. The design is focused on the guide being easy to maintain and set. These features are expected in the current market, especially when trying to improve productivity. The guide roller bearings are lubricated directly through the pin head for a more positive solution and can be used with either 'Air Oil' or grease to suit the customer's preference.

FEATURES

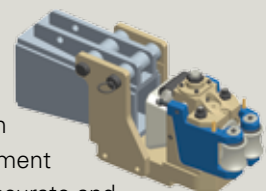
- Reliable design – easy to set and maintain
- Small interchangeable 'family' of guides to cover a large stock range
- Single point and individual adjustment of guide roll centres
- Individual adjustment of guide roll heights
- Minimum parts for low spare stock levels

ANCILLARY EQUIPMENT

- Mechanical setters:
For accurate, quick and easy setting of guide rolls, on and off the mill, as well as for setting the guides to centre lines of pass.



- Additional Entry funnels:
Designed to fit in mill set ups where gaps between stands and inter-stand equipment are greater, used for more accurate and stable transition through the rolling mill.



Service Competence **WORLDWIDE**

SMS Meer Service – by your side – worldwide

Speed and competence are the crucial quality factors in the service business. Our service offices worldwide guarantee rapid on-the-spot assistance in the customer's language – and more importantly: With the know-how of an OEM.

SMS Meer assists you in maintaining a lasting competitive edge through personal and competent support. Just call us.

Your SMS Meer Service Team

SMS MEER GMBH

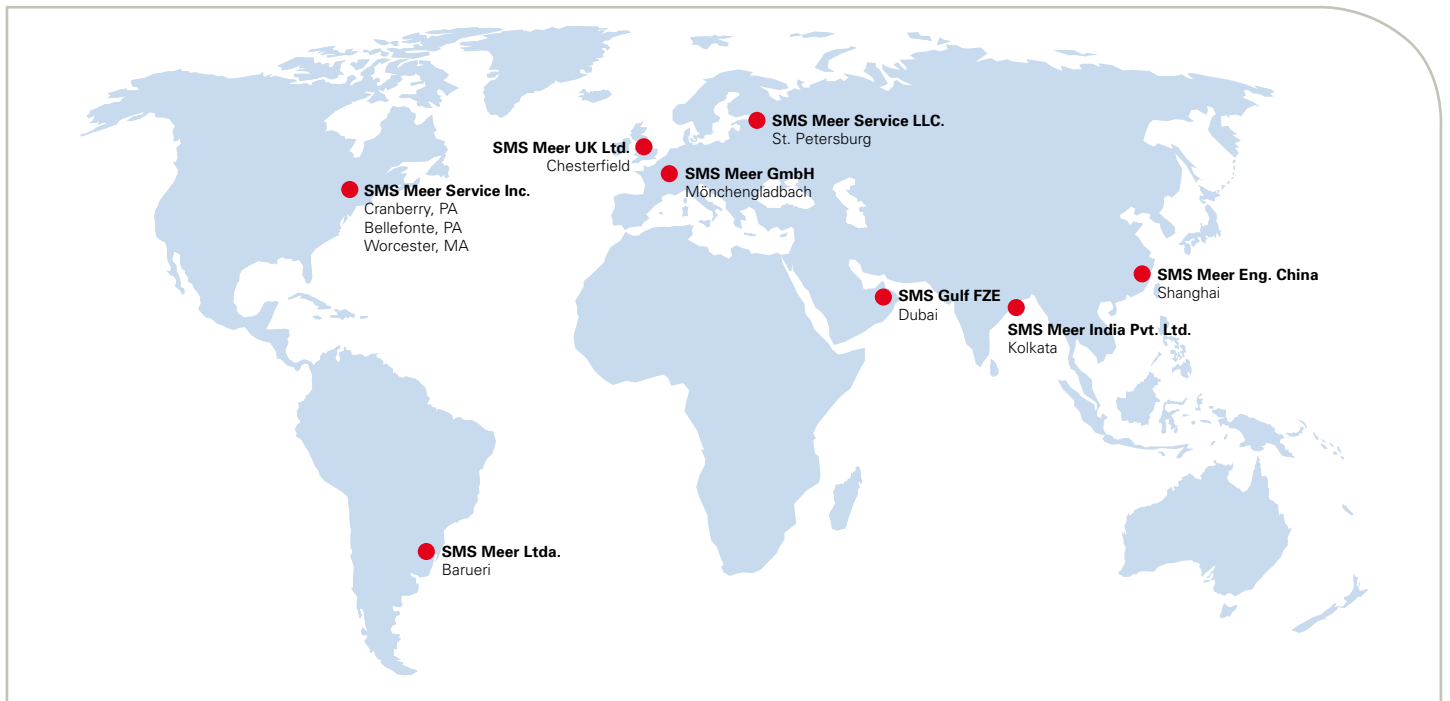
Ohlerkirchweg 66
41069 Mönchengladbach
Germany

Phone: +49 (0) 2161 350 1771

Fax: +49 (0) 2161 350 1980

serviceinfo@sms-meer.com

www.sms-meer.com



Our Service and Support Centers

SMS Meer Service Inc.

210 West Kensinger Drive
Cranberry Twp., PA 16066-3435 / USA
Phone: +1 724 553 3420
Fax: +1 724 741 0612
serviceinfo@sms-meer.us

SMS Meer Service Inc.

234 S. Potter Street
Bellefonte, PA 16823-1387 / USA
Phone: +1 814 355 4774
Fax: +1 814 353 6248
serviceinfo@sms-meer.us

SMS Meer Service Inc.

330 Southwest Cutoff
Worcester, MA 01604-2730 / USA
Phone: +1 724 553 3919
Fax: +1 508 755 4038
serviceinfo@sms-meer.us

SMS Meer Service LLC.

Tambovskaya ul., d. 12, kv. 61,62
192007, St. Petersburg / Russia
Phone: +7 812 718 80 98
Fax: +7 812 718 80 99
serviceinfo@sms-meer.ru

SMS Meer (UK) Ltd.

40-41, The Bridge Business Centre
Beresford Way, Dunston Road
Chesterfield S41 9 FG / Great Britain
Phone: +44 (0) 1246 266 250
Fax: +44 (0) 1246 266 255
serviceinfo@sms-meer.co.uk

SMS Gulf FZE

Dubai Airport Free Zone
Building 4E, Block Office A, G16
P.O. Box 54795, Dubai, U.A.E
Phone: +971 4 204 5010
Fax: +971 4 204 5017
serviceinfo@sms-meer.com

SMS Meer Engineering (China) Ltd.

No. 1835, Duhui Road, Minghng District
Shanghai 201108 / China
Phone: +86 21 34 30 5408
Fax: +86 21 34 30 5400
serviceinfo@sms-meer.cn

SMS Meer India Pvt. Ltd.

RDB Boulevard, 4th Floor, Unit-D, Plot No. K1
Block EP & GP, Sector-V Salt Lake City
Kolkata- 700091 / India
Phone: +9 1124 4351 500
Fax: +9 1124 4351 603
serviceinfo@sms-meer.in

SMS Meer Ltda.

Alameda Rio Negro
1030, Conj. 803
06454-000 Barueri / Brazil
Phone: +55 11419 18 181
Fax: +55 11419 18 177
serviceinfo@sms-meer.br